

241 Deansgate, Manchester, Lancashire, M3 4EL
Tel: 0161 637 8336
Email: contactus@ascendproperties.com
www.ascendproperties.com

Ascend

Built on higher standards



Vallea Court, Red Bank, Manchester

£800 PCM

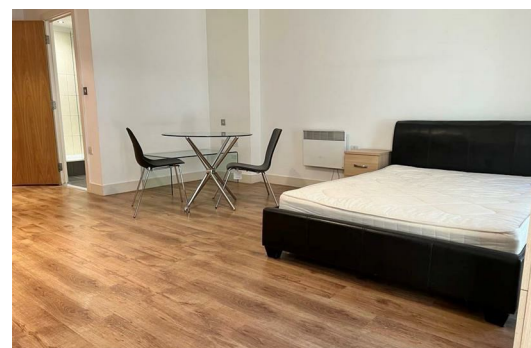
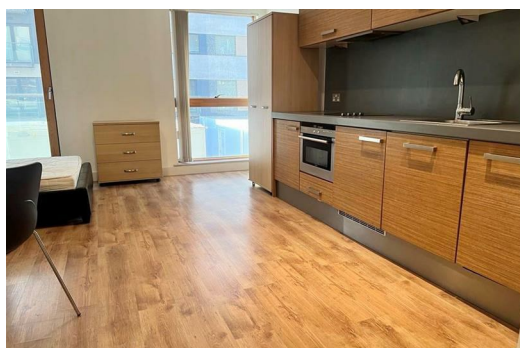
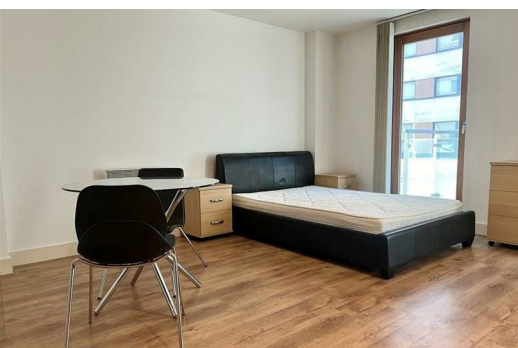
We've got a studio apartment up for grabs in the heart of the Green Quarter - a hugely popular area with several purpose-built developments which are perfect for working professionals who need quick and easy access to the city centre.

Situated in a super-slick development, this apartment is the height of luxury and style. Take a step inside and you'll find an ultra-modern kitchen and bathroom - perfect for today's busy city dweller. In fact, no stone has been left unturned whilst kitting this property out with all the top-notch fixtures and fittings you'd expect from a city centre apartment. You'll also benefit from some cracking views of the communal garden and fountain, with an on-site caretaker too - how great is that?

Here you'll be just a stone's throw from Victoria station, and the main ring road is within easy reach too - so travelling around the city is an absolute breeze. Fancy a spot of shopping? The Arndale centre is just a few minutes away too - you really couldn't be more perfectly placed for both work and play.

If you're interested in having a closer look, or have any questions, do get in touch. The pictures for this apartment are for marketing purposes only, so the internal fixtures, fittings and furnishings may vary.

Available 4th July 2024



Living area

22'7" x 14'10" (6.90 x 4.54)

Spacious living area. Modern kitchen along one side of the room - with integrated appliances, living area along the opposite and balcony door onto your private terrace at the end.

Bathroom

8'2" x 5'7" (2.50 x 1.72)

Modern three piece bathroom suite.



Energy Efficiency Rating			Environmental Impact (CO ₂) Rating		
Band	Score	Current	Band	Score	Current
A	92-100		A	35-47	
B	81-91		B	28-34	
C	69-80		C	22-27	
D	55-68		D	16-21	
E	39-54		E	10-15	
F	22-38		F	7-9	
G	1-21		G	1-6	
England & Wales			England & Wales		
Current	78	88	Current	75	78